



Description

This document describes how to connect a DCS 6000 Digital Conferencing system to a Polycom telephone interface. This document references the Polycom Conference Composer software which is used for configuring the Polycom telephone interface line inputs/outputs. The procedures listed here are to be used as a starting point with minor adjustments to be made as necessary.

Note: *The configuration and screen shots in this document are for configuring a Polycom Vortex EF2211. If other Polycom models are to be configured, the same procedures apply.*

Attention: *If there is a need for interpretation via telephone line, more equipment will be needed.* Please contact Listen to discuss configurations and possible solutions.

Setting up the DCS 6000 CU for teleconferencing

Out of the box, when in default configuration a few adjustments are required for the CU.

1. Switch on the unit, it starts up automatically in the "Audio control" menu.
2. Scroll down one click until the "LineIn -> Loudspk:" line appears with default setting; "Off".
3. Adjust the "LineIn -> Loudspk:" setting to "0dB" and press enter this is to allow the audio from the phone to be routed to the unit loudspeakers.
4. Scroll down one more click and verify that "LineIn -> LineOut:" is "Off". This puts the CU into Mixminus mode and prevents the audio from the far end being fed back to the far end.
5. Scroll down two more clicks and adjust "Loudspk Volume:" to a comfortable level for the room when talking into the conference units in the room press enter. The default setting of "-20dB" will be too soft for most applications.
6. Press the menu button.
7. Scroll down and select the "Configuration" menu.
8. Select the "Save Configuration" option and confirm, this ensures that your settings are maintained when switching the unit off/on.

If the CU is not in the factory default settings you can do 2 things.

Option 1:

1. Press the menu button
2. Scroll down and select the "Configuration" menu
3. Select the "Delete Configuration" option and confirm, this returns the CU to the factory default mode
4. Power Cycle the CU
5. Follow steps 1-8 listed above

Option 2:

1. Select the "Audio control" menu
2. Put in the following settings
 - Loudspk volume: -13dB
 - Lineout volume: 0dB
 - MIC -> Loudspk: 0dB
 - MIC-> LineOut: 0dB
 - LineIn -> Loudspk: 0 dB
 - LineIn -> LineOut: Off
 - LineIn Level Adj: 0dB

Connect an analog phone line to the Polycom unit

- 1 Connect a standard analog line to the Line connector on the back of the Polycom unit.
- 2 Connect an analog phone to the Phone connector on the back of the Polycom unit as this is needed for dialing.

How to connect a DCS 6000 Digital Conferencing system to a Polycom conferencing processor

Connecting the line inputs/outputs

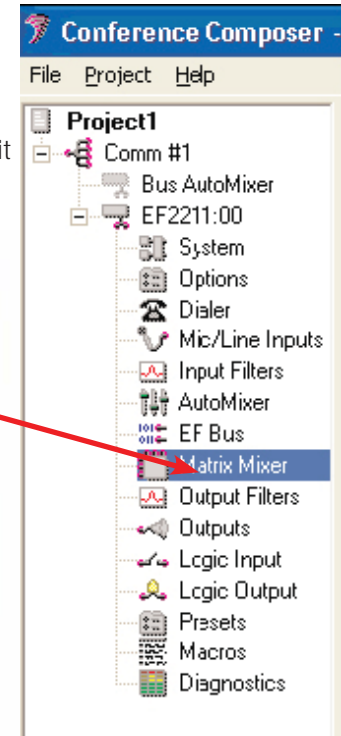
Connect the "Line Input" from the DCS 6000 CU (XLR connector) to output 1 on the Polycom unit (Phoenix connector).

Connect the "Line Output" from the DCS 6000 CU (XLR connector) to input 1 on the Polycom unit (Phoenix connector).

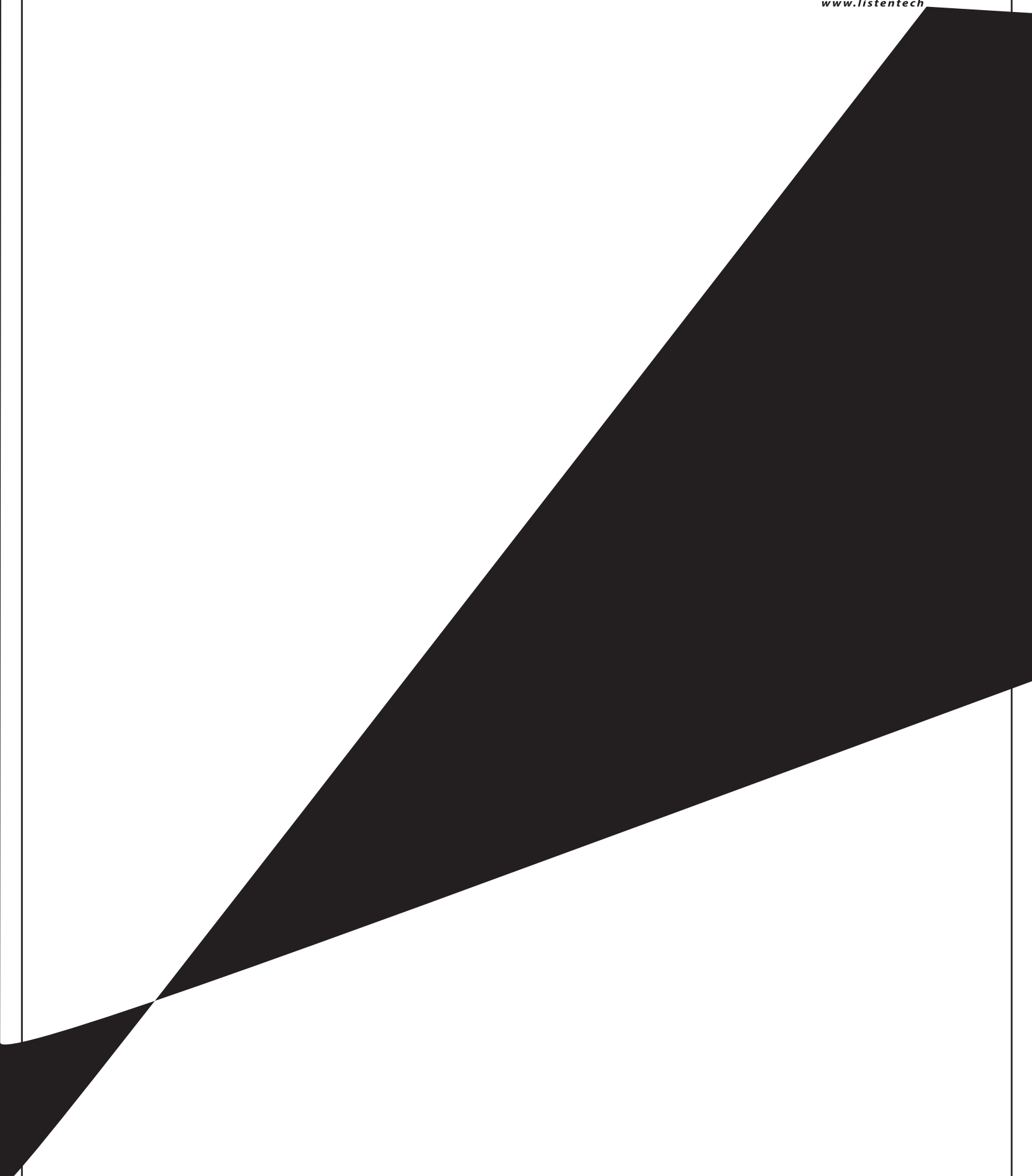
Configuring the Polycom unit using the Polycom Conference Composer software

- 1 Install and configure the Polycom Conference Composer software according to the software installation instructions.
- 2 Connect your computer to the Polycom using a straight through RS232 serial cable.
- 3 Start the Conference Composer software and connect to the Polycom unit according to the software instructions.
- 4 Open the Matrix Mixer tab.

		IN	FDR	1	A	B	T	P	W	X
OUT				-10	-6	0	3			
NOM				On	On	On	On			
From DCS 6000 CU	1	15	0	0	0	0	0	0	0	0
Input A	A	0	0	0	0	0	0	0	0	0
Input B	B	0	0	0	0	0	0	0	0	0
Input T	T	6	0	0	0	0	0	0	0	0
SubMix PM0	PM0			0	0	0	0		0	0
SubMix PM1	PM1			0	0	0	0		0	0
SubMix WM0	WM0			0	0	0	0		0	0
SubMix WM1	WM1			0	0	0	0		0	0
SubMix WM2	WM2			0	0	0	0		0	0

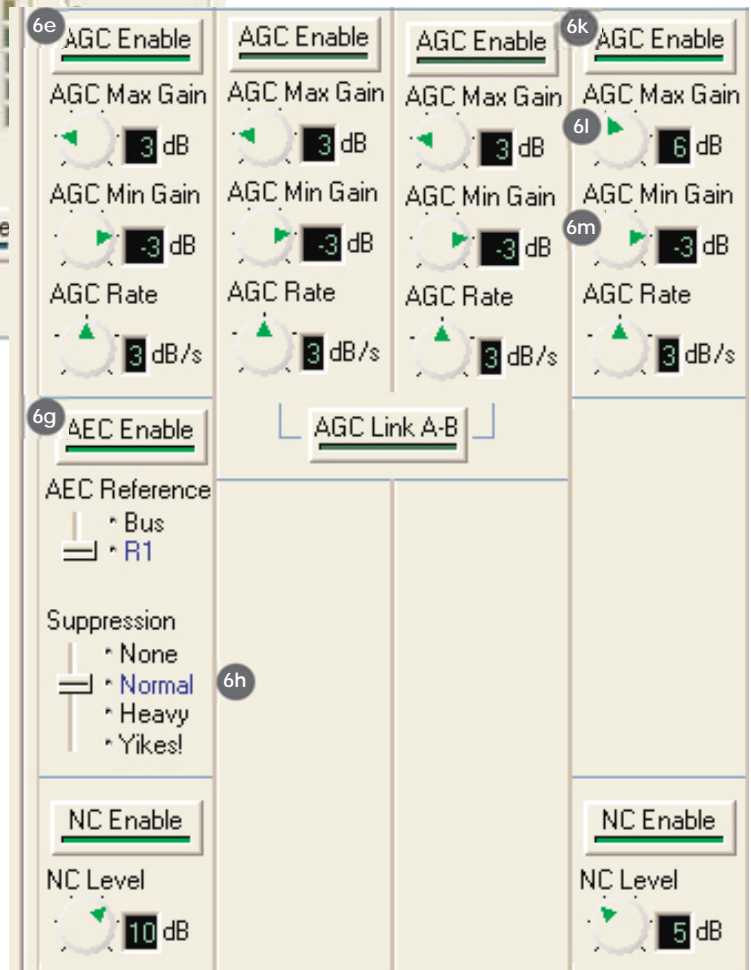
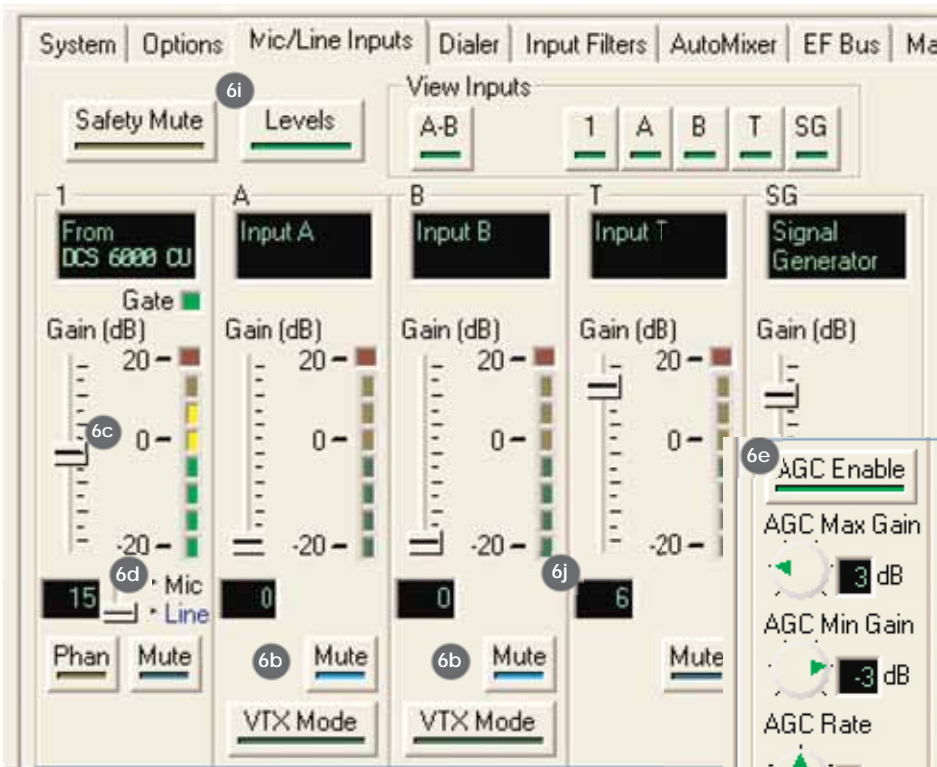
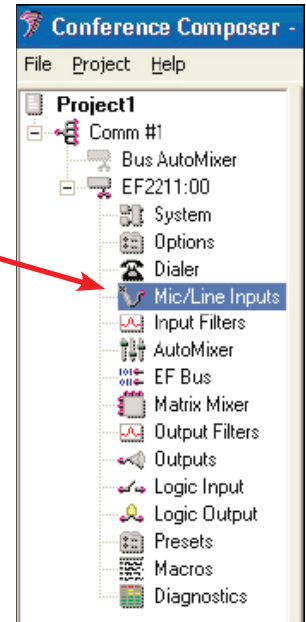


- 5 Label the line inputs and outputs.
 - 5a Input 1 is audio coming from the DCS 6000 CU so it should be labeled "From DCS 6000 CU".
 - 5b Output 1 is audio going to the DCS 6000 CU so it should be labeled "To DCS 6000 CU".



Configuring the Polycom unit using the Polycom Conference Composer software (cont.)

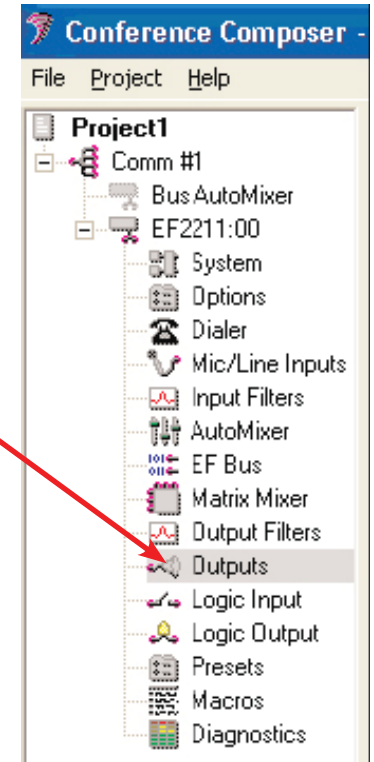
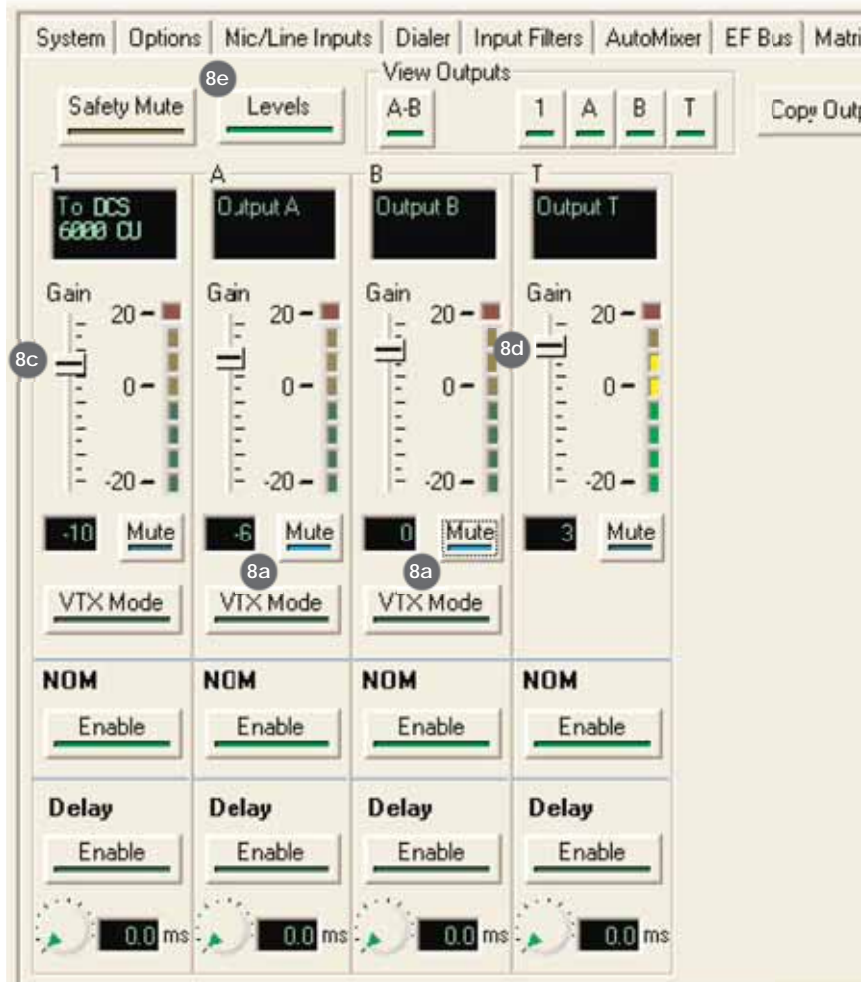
- 7 Adjust Input Gain
 - 6a Click on the Mic/Line Inputs tab.
 - 6b Mute all inputs not used (Input A, Input B).
 - 6c Adjust the "From DCS 6000 CU" gain to +15.0dB.
 - 6d Switch the Mic/Line slider to Line.



- 6e Make sure AGC Enable is on.
- 6f Turn on AEC Enable.
- 6g Change AEC Reference to R1.
- 6h Change Suppression to Normal.
- 6i Click the Levels button to activate the level meters. Talk into a DCS 6000 mic and adjust as need to have the meter read just above 0.
- 6j Adjust the Telco (Input T) gain to +6.0dB.
- 6k Make sure AGC Enable is on.
- 6l Adjust the AGC Max Gain to +6.0dB.
- 6m Adjust the AGC Min Gain to -3.0dB.
- 6n Call into the Polycom telephone interface unit by calling the phone number of the line that is connected to the unit.
- 6o Once connected, adjust the Input T as needed so it is reading just above 0.

Configuring the Polycom unit using the Polycom Conference Composer software (cont.)

- 8 Adjust Output Gain
 - 8a Open the Outputs screen by clicking on Outputs tab.
 - 8b Mute all unused outputs (Output A, Output B)
 - 8c Adjust the output "To DCS 6000 CU" to -10.0dB
 - 8d Adjust the Telco (Output T) to +3.0dB.
 - 8e Click the Levels button to activate the level meters. Talk into a DCS 6000 mic and adjust as need to have the meter read just above 0.



This concludes setting up the DCS 6000 system to a Polycom telephone interface unit. Adjustments might need to be made to any of the input or output gains based on your environment but this will give you a starting point for making the connection successful.

For additional assistance with the DCS 6000 System, contact Listen Technical Support at +1.800.330.0891.